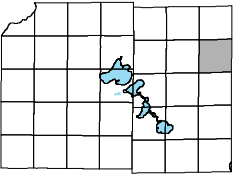
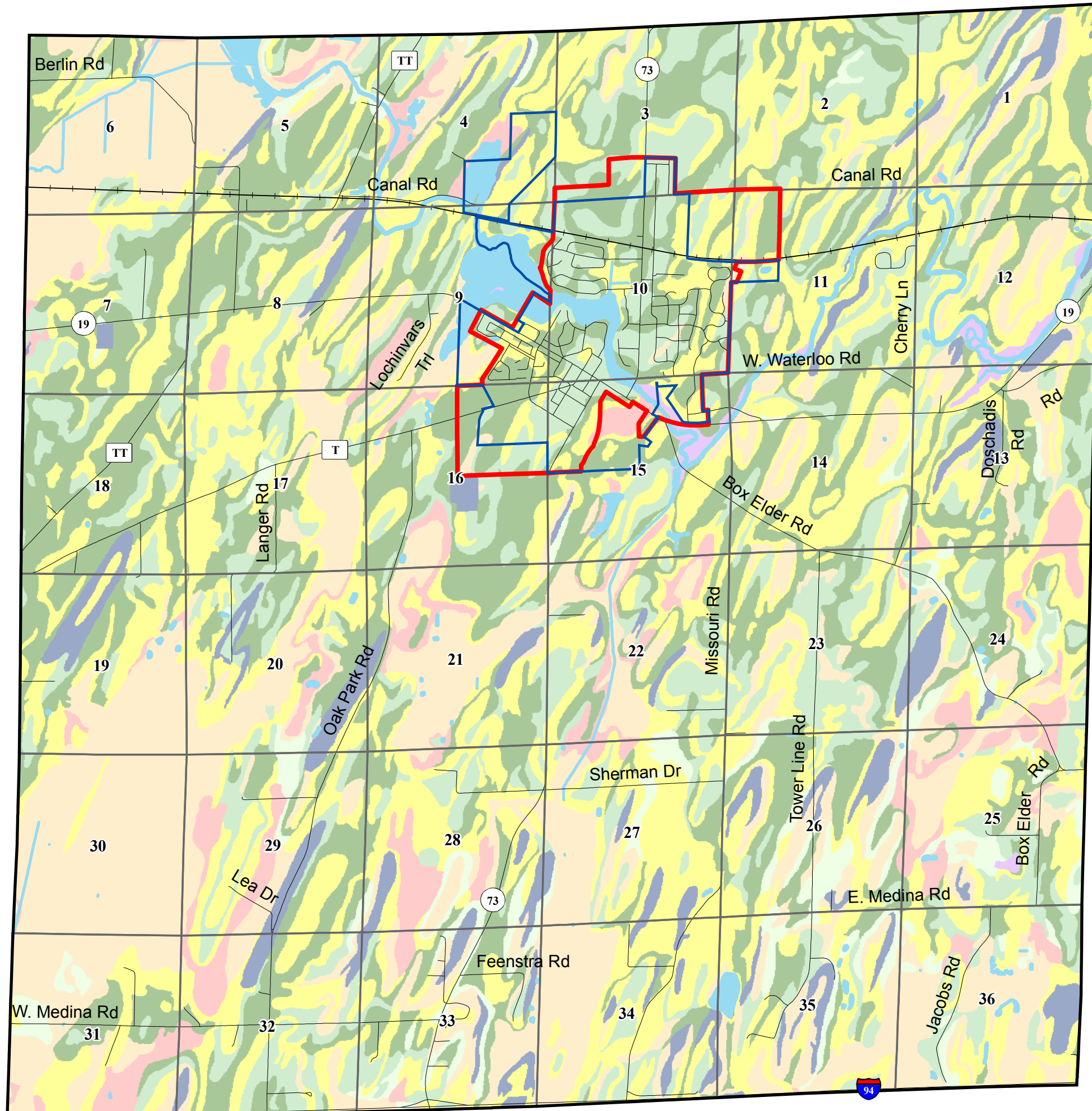


Town of Medina



Map 3: Agricultural Land Evaluation

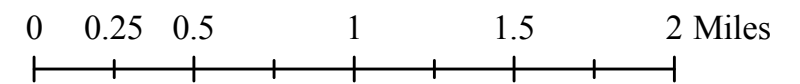


- I (best soils for agricultural use)
- II
- III
- IV
- V
- VI
- VII
- VIII
- Marshall Urban Service Area
- Marshall Village Boundary
- Section Boundary

Agricultural Groups are based on the Land Evaluation Site Assessment rating system from *Land Evaluation and Site Assessment: A Guidebook for Rating Agricultural Lands, Second Edition*, published by the Soil and Water Conservation Society.

Contact The Dane County Land and Water Resources Department for further details.

September, 2007



Source Info:
 Agricultural Groups: Digital Soils (NRCS, LCD, LICGF).
 Marshall Village Boundary: 01/07, (DCPD)
 Service Areas: 09/07, (DCPD)

This map was prepared through the Dane County Department of Planning and Development in conjunction with the Dane County Land & Water Resources Department, Dane County Land Information Office and the Dane County Community Analysis & Planning Division.