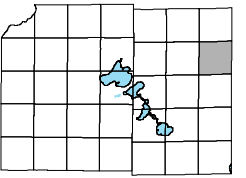
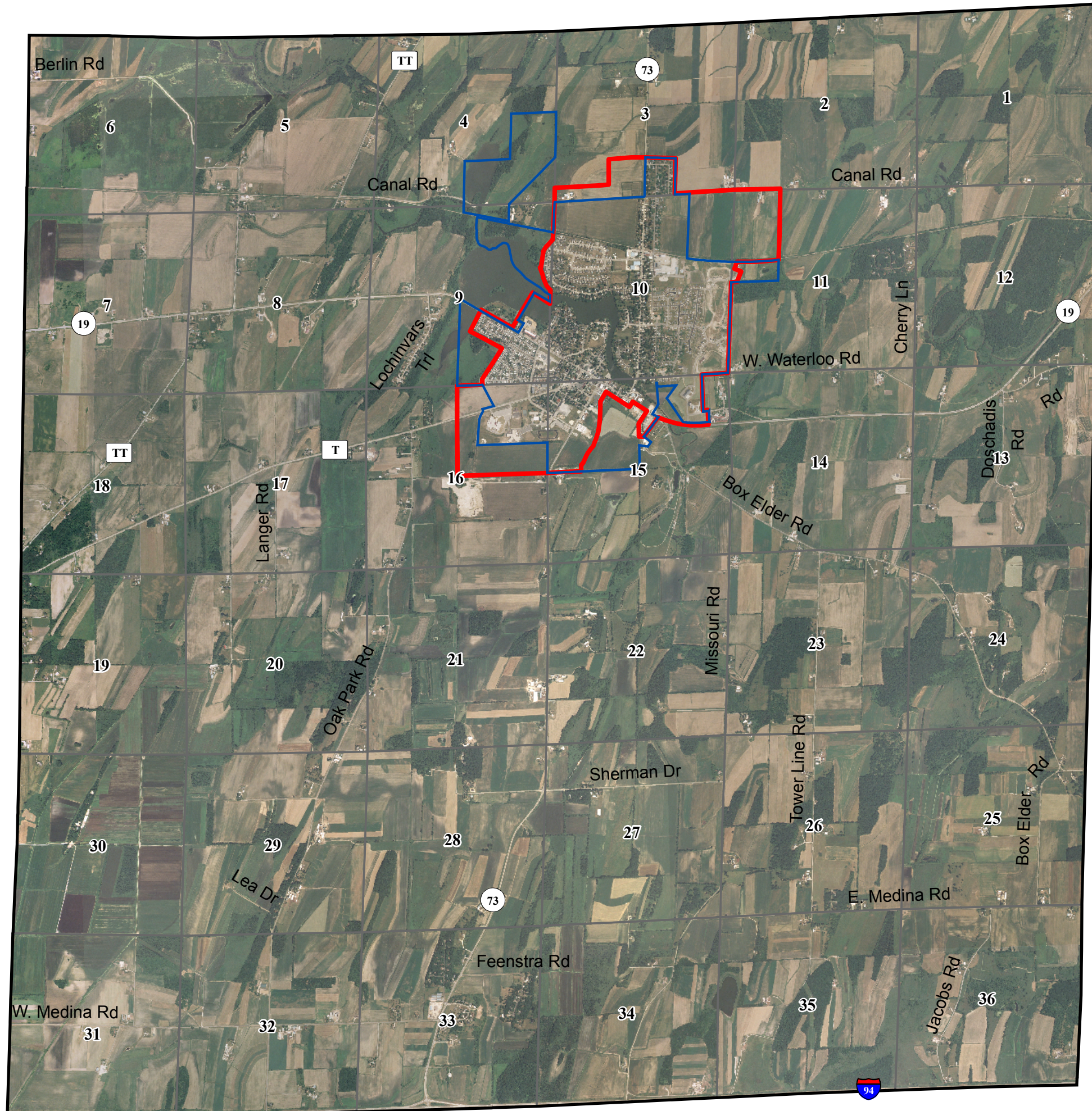





Town of Medina

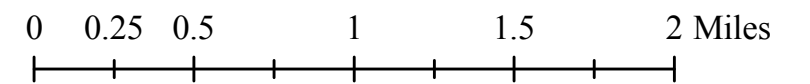


Map 2: 2005 Aerial Photograph



-  Marshall Village Boundary
-  Marshall Urban Service Area
-  Section Boundary

September, 2007



Source Info:
Aerial Photograph: 06/05, (FSA/LWRD)
Marshall Village Boundary: 01/07, (DCPD)
Service Areas: 09/07, (DCPD)

This map was prepared through the Dane County Department of Planning and Development in conjunction with the Dane County Land & Water Resources Department, Dane County Land Information Office and the Dane County Community Analysis & Planning Division.