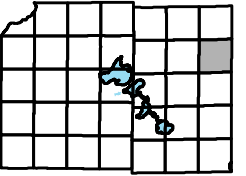
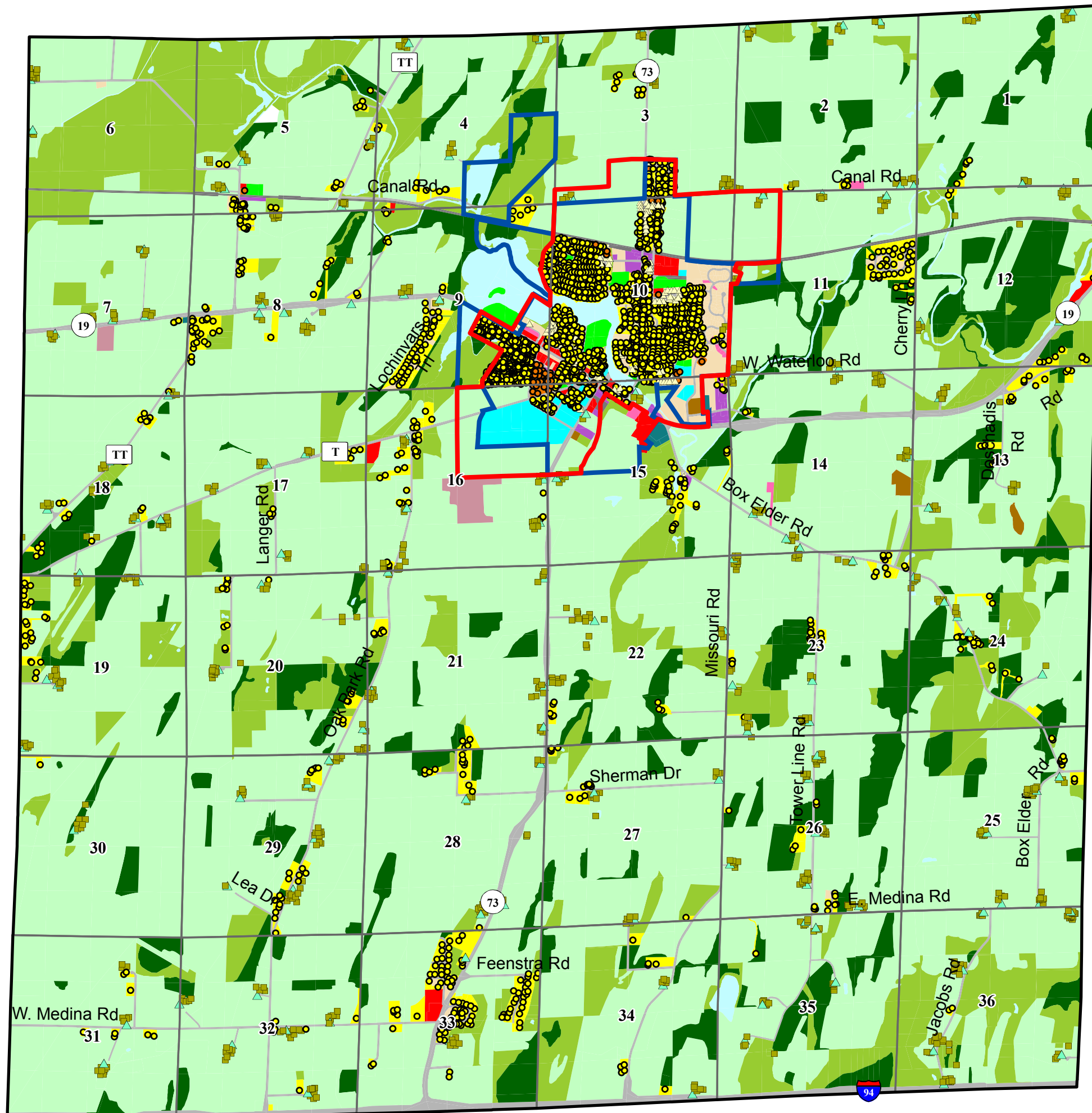


Town of Medina

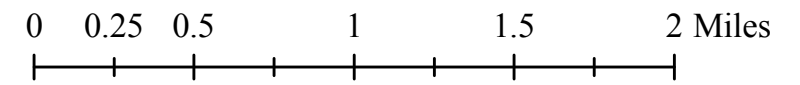


Map 12: 2005 Land Use



Marshall Urban Service Area (2005)	Land Use Categories (2005)
Marshall Village Boundary (2005)	Agriculture
Section Boundary	Cemetery
Land Use Structures (2005)	
Single Family	Commercial Forest
Two Family	Commercial Sales or Services
Multi-Family	Communications or Utilities
Farm Dwelling	Extractive
Agricultural Accessory Building	Industrial
	Institutional or Governmental
	Multi-Family
	Open Land
	Outdoor Recreation
	Right of Way
	Single Family
	Transportation
	Two Family
	Under Construction
	Vacant
	Water
	Woodland

September, 2007



Source Info:
 Land Use: 2005, (DCCAPD)
 Marshall Village Boundary: 2007, (DCPD)
 Service Areas: 2007, (DCPD)

This map was prepared through the Dane County Department of Planning and Development in conjunction with the Dane County Land & Water Resources Department, Dane County Land Information Office and the Dane County Community Analysis & Planning Division.