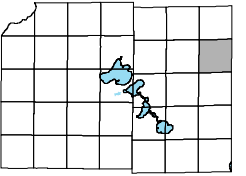
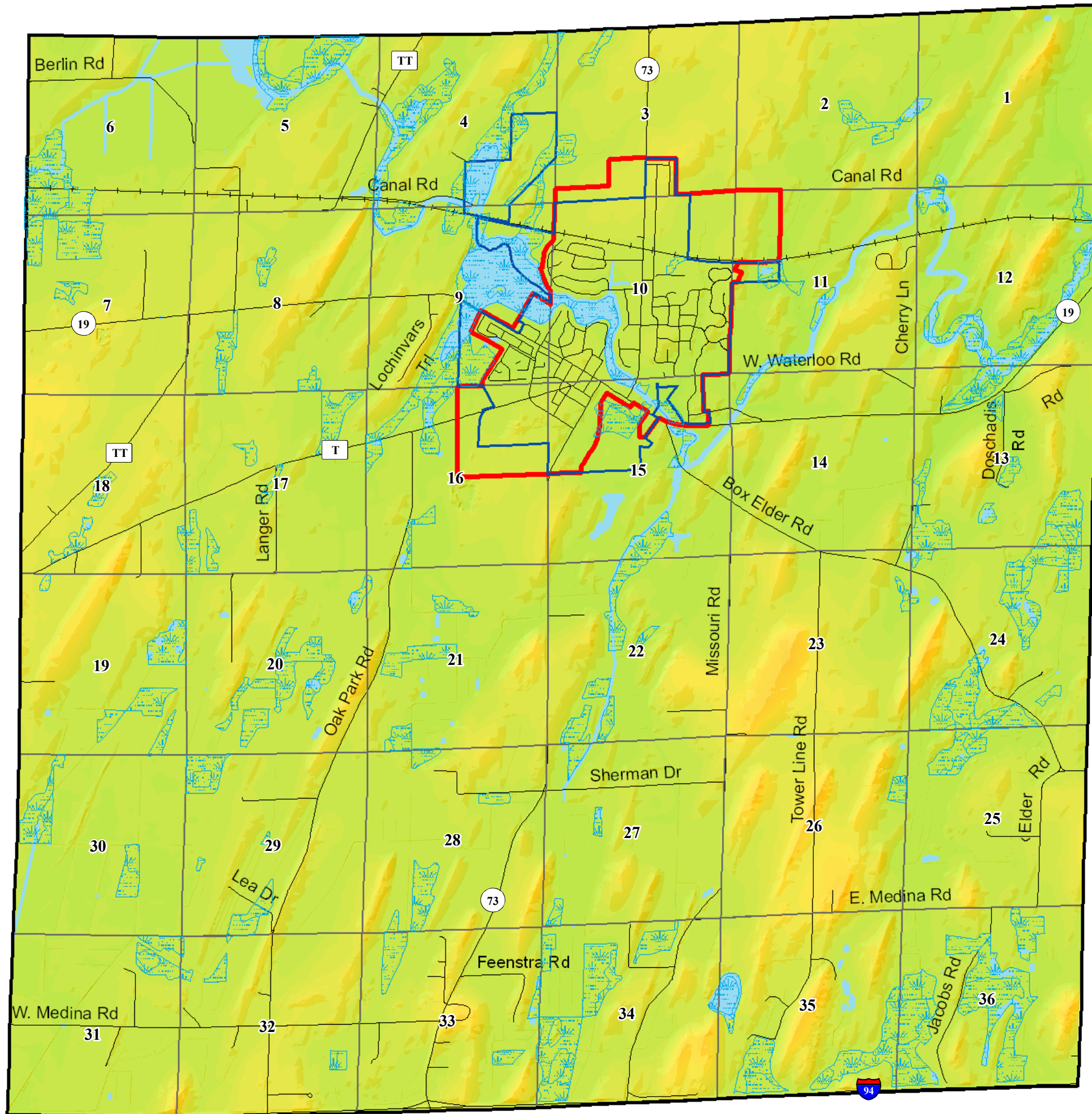


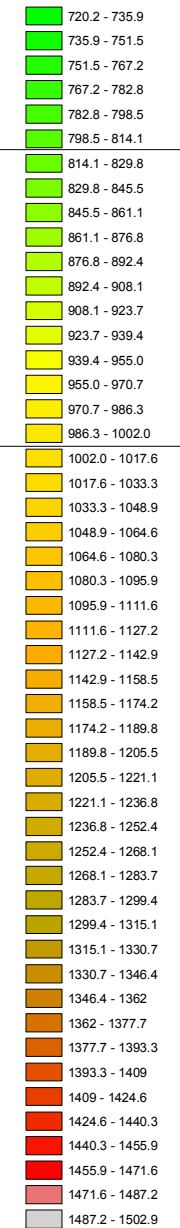
Town of Medina



Map 5: Elevation



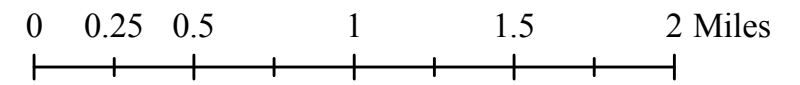
Dane County Elevation Range (msl)



*Town of
Medina
Elevation*

- Wetlands (DNR)
- Lakes/Ponds
- Rivers/Streams
- Section Boundary
- Marshall Urban Service Area
- Marshall Village Boundary

September, 2007



Source Info:
Elevation: 2000, (DCLIO)
Marshall Village Boundary: 01/07, (DCPD)
Service Areas: 09/07, (DCPD)
Wetlands: 2000, (WIDNR)

This map was prepared through the Dane County Department of Planning and Development in conjunction with the Dane County Land & Water Resources Department, Dane County Land Information Office and the Dane County Community Analysis & Planning Division.