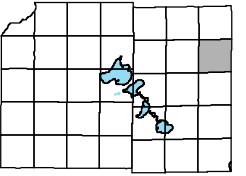
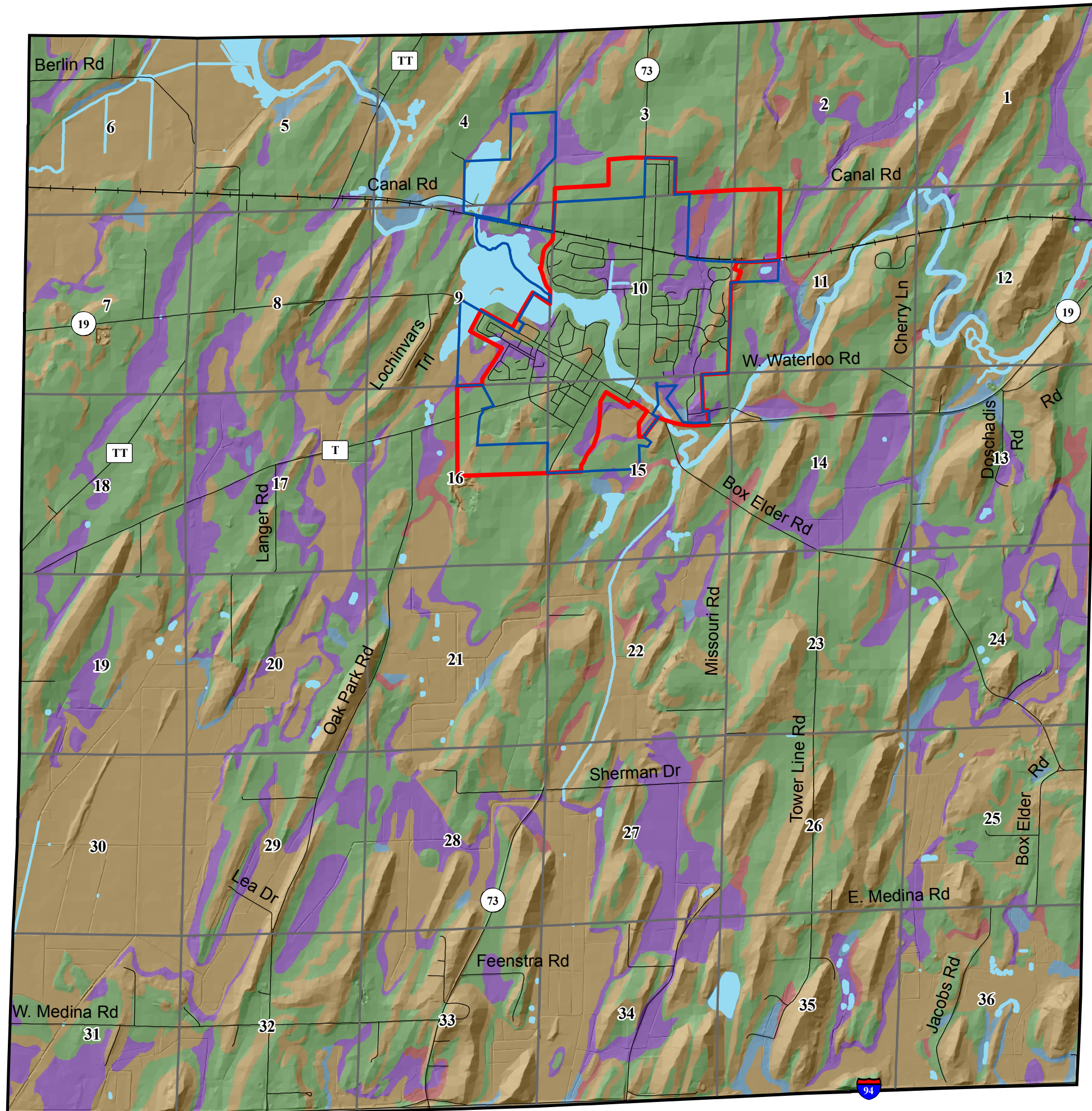


Town of Medina



Map 21: Prime Farmland



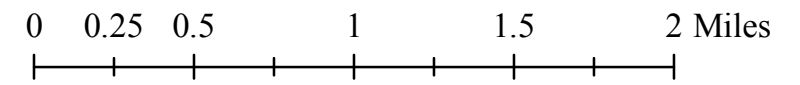
- Marshall Urban Service Area
 - Marshall Village Boundary
 - Section Boundary
- Prime Farmland Classifications**
- PF1
 - PF2
 - PF3
 - PF5
 - Unknown

PF1 All areas are prime farmland.
 PF2 Only drained areas are prime farmland.
 PF3 Only areas protected or not frequently flooded during the growing season are prime farmland
 PF5 Only drained areas that are either protected from flooding or not frequently flooded during the growing season are prime farmland.

Prime farmland is land that has the best combination of physical and chemical characteristics for producing food, feed, forage, fiber, and oilseed crops and that is available for these uses. It has the combination of soil properties, growing season, and moisture supply needed to produce sustained high yields of crops in an economic manner if it is treated and managed according to acceptable farming methods. In general, prime farmland has an adequate and dependable water supply from precipitation or irrigation, a favorable temperature and growing season, an acceptable level of acidity or alkalinity, an acceptable content of salt or sodium, and few or no rocks. Its soils are permeable to water and air. Prime farmland is not excessively eroded or saturated with water for long periods of time, and it either does not flood frequently during the growing season or is protected from flooding.

Contact The Dane County Land and Water Resources Department or Natural Resources Conservation Society for further details.

September, 2007



Source Info:
 Prime Farmland: Digital Soils (NRCS, LCD, LICGF).
 Marshall Village Boundary: 01/07, (DCPD)
 Service Areas: 05/08, (CARPC)

This map was prepared through the Dane County Department of Planning and Development in conjunction with the Dane County Land & Water Resources Department, Dane County Land Information Office and the Dane County Community Analysis & Planning Division.